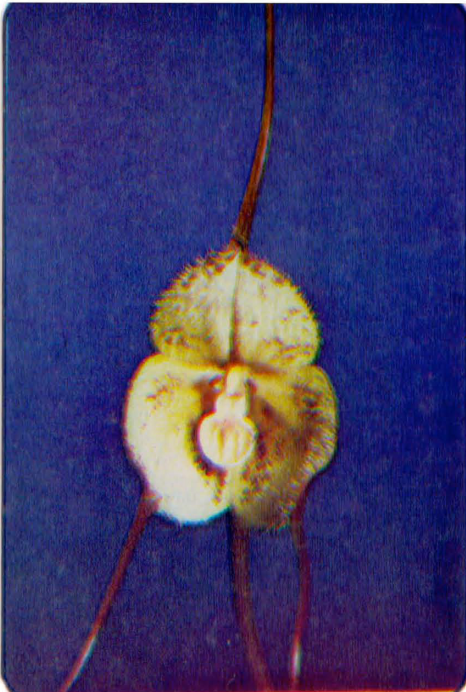


Dracula Circe Luer & Escobar, sp. nov.

Inter species **Draculæ** Luer species hæc differ habitu grandis foliis subplicatis, racemo paucifloro horizontali, floribus mediocribus patentibus, sepalis late ovatis intus longi-pubescentibus albovirescentibus purpureo punctatis caudis longis marroninis filiformibus et labelo salmonæo epichilio suborbiculari concavo trilamellato marginibus involutis denticulatis.

Plant large, epiphytic, caespitose; roots coarse, flexuous. Secondary stems slender, channeled, 4 - 6 cm long, enclosed by 2 - 3 loose, tubular sheaths. Leaf erect, thinly coriaceous, subplicate, carinate dorsally, narrowly obovate, 15 - 27 cm long 2.8 - 3.3 cm wide, gradually narrowed below into the conduplicate base. Inflorescence successively few-flowered, raceme, the flowers medium-sized, colorful,



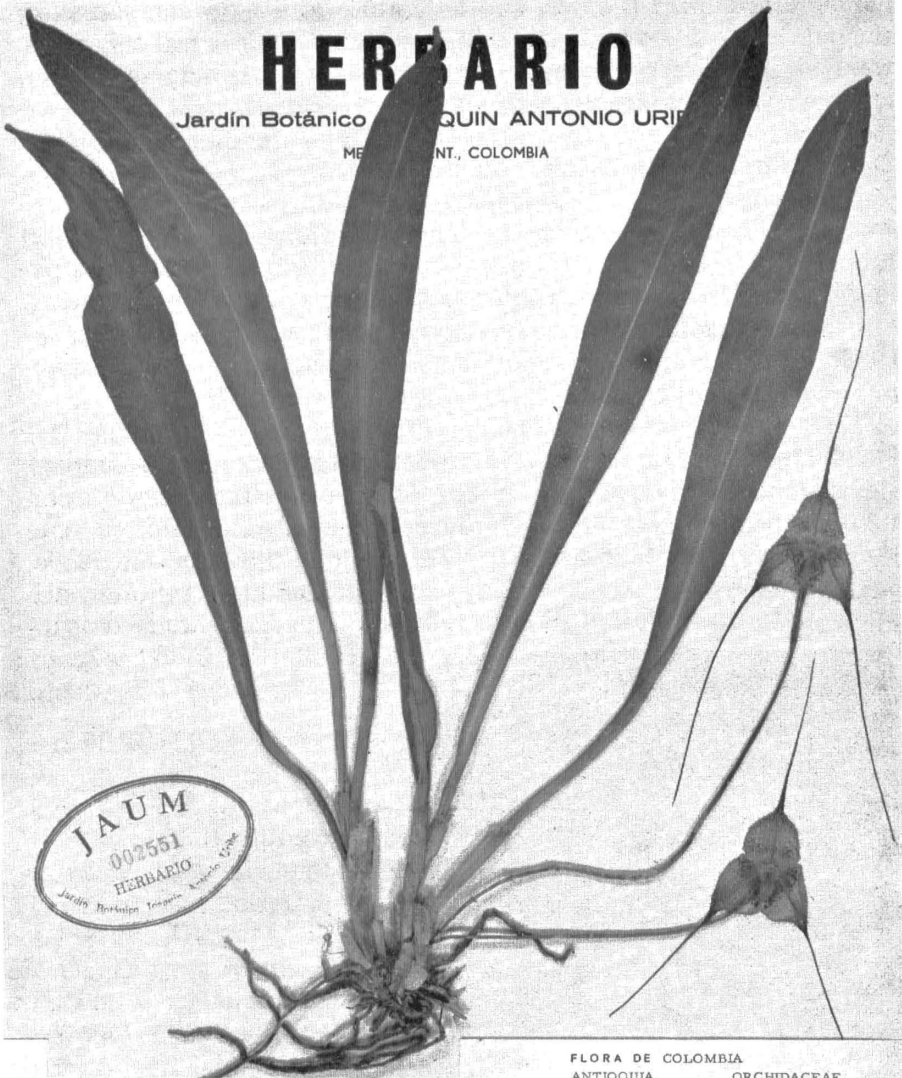
Dracula circe

Luer & Escobar, sp. nov.

HERBARIO

Jardín Botánico JOAQUÍN ANTONIO URIBE

MEDIANTE, COLOMBIA



HOLOTIPO

FLORA DE COLOMBIA
ANTIOQUIA ORCHIDACEAE

Dracula circe Luer & Escobar

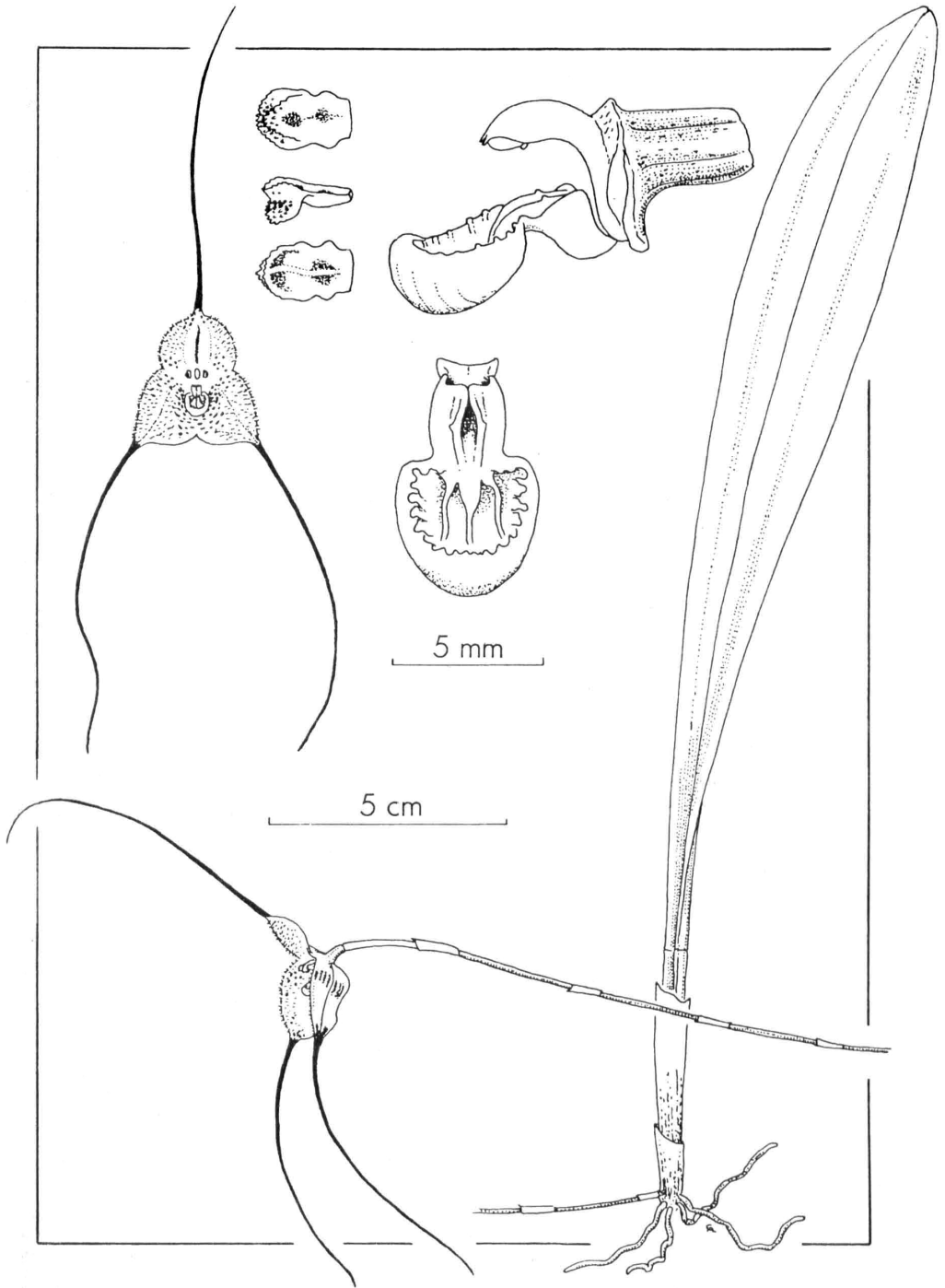
Cordillera Occidental, alt. 1700-2000 m, recolectada por J. M. Serna, Noviembre 1975, cult. por M. & O. Robledo en La Ceja.

Sépalos blanco-verdoso ligeramente punteados de morado y con pubescencia blanca, caudas rojo-morado, pétalos marfil marcados con café, labelo color salmón.

Colector: R. Escobar

No. 1883 Fecha, floreció en cult. 20 Julio 1978

HERBARIO JARDIN BOTANICO JOAQUIN ANTONIO URIBE



Dracula circe Luer & Escobar, sp. nov.

borne by a red, horizontal, sparsely-bracted peduncle 12 - 16 cm long from a node low on the secondary stem; floral bract 1 cm. long; pedicel 2.5 cm long; ovary greenish brown, 4 - 5 mm long; sepals greenish white, with a long, white pubescence within, lightly dotted with purple, broadly ovate, the dorsal sepal 12 mm long, 15 mm wide, connate to the lateral sepals for 6 mm to form a widely spread flower, the rounded apex contracted into a slender, red-purple tail 6.5 cm long, the lateral sepals oblique, connate 9 mm into a lamina 26 mm wide with a broad, shallow mentum, each lateral sepal 17 mm long, 16 mm wide, with subacute apices contracted into tails similar to that of the dorsal sepal; petals ivory, marked with brown, oblong, 3 mm long, 2 mm wide, the apex bivalvate, papillose between the rounded external lamina and the acute, verrucose, inner lamina; lip salmon-colored, spatulate, 7 mm long, 5 mm wide, the hypochile oblong, 2.5 mm long and wide, the marginal angles obtuse, erect, cleft centrally, the concave base hinged to the column-foot, the epichile suborbicular, 4.5 mm long, 5 mm wide, concave with involute, toothed margins, trilamellate within; column yellow-white, semiterete, 4 mm long, with a stout foot equally long.

ETIMOLOGIA: En nombre de la bella y mitológica hechicera Circe.
ETYMOLOGY: Named for the beautiful mythological enchantress Circe.

TYPE: **COLOMBIA:** ANTIOQUIA: Western Cordillera, alt. 1700-2000 m; Nov. 1975, J. M. Serna s.n. cultivated at La Ceja by M & O Robledo, flowered in cult. 20 July 1978, R. Escobar 1883 (HOLOTYPE: JAUM: ISOTYPE: SEL), C. Luer illustr. 2935.

DISTRIBUTION: Colombia, Western Cordillera.

Dos plantas de esta rara especie fueron colectadas en Noviembre de 1975 con la muy inusitada *D. pileus* Luer & Escobar. Cultivadas afuera en una cama con esta última y con muchas plantas de *D. Chimaera* (R chb.f.) Luer, sus flores pasaron desapercibidas hasta Julio de 1978. Esta especie se caracteriza por las grandes hojas subplegadas, las flores blanco verdoso, de tamaño mediano, pubescentes por dentro, con manchas púrpura y colas marrón largas y delgadas. El labelo color salmón es típico para muchas especies: un epiquilo suborbicular más grande que el hipoquilo, trilamelado y con márgenes denticuladas, involutas.

Two plants of this rare species were collected in Nov. 1975; with the very unusual *D. pileus* Luer & Escobar. Growing outside in a bed with the later and many plants of *D. chimaera* (R. chb. f.) Luer, flowers were unnoticed until July 1978. This species is characterized by the large, subplicate leaves, medium-sized, greenish white flowers pubescent within with purple dots, and long, slender, maroon tails. The salmon-colored lip is standard for many species: a suborbicular epichile larger than the hypochile, trilamellate, and with involute, denticulate margins.